



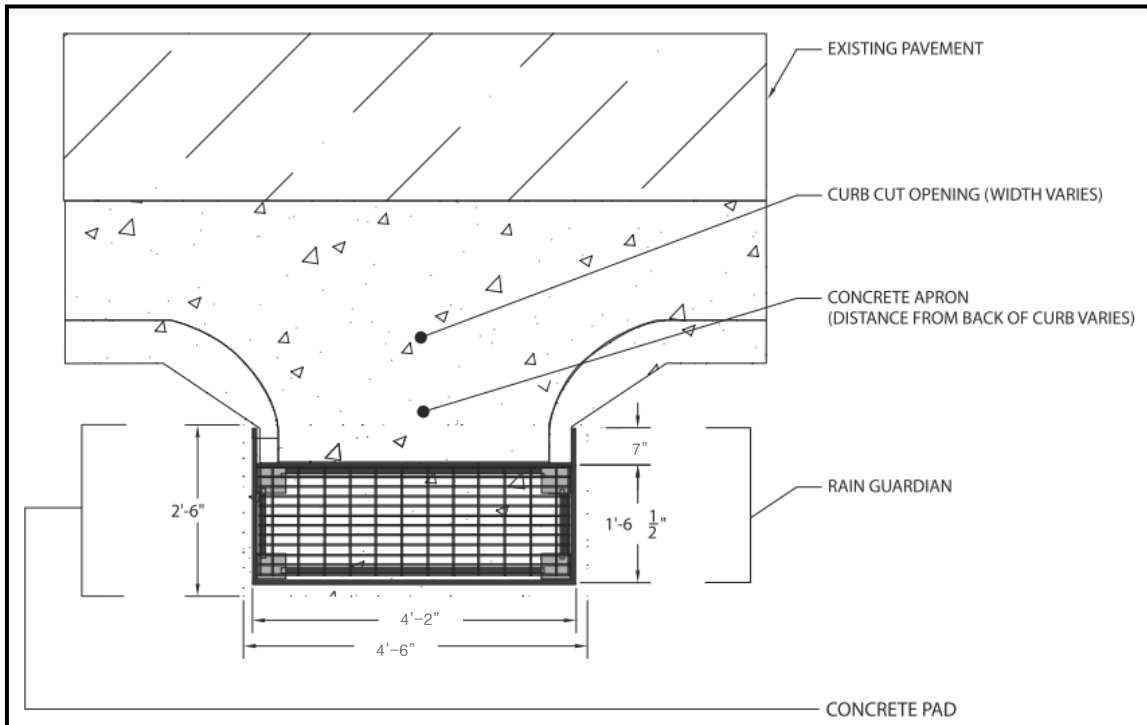
BUNKER TYPICAL DETAIL

1318 MCKAY DR. NE, SUITE 300
HAM LAKE, MN 55304
(763) 434-2030 (M-F 8:00-4:30)
WWW.ANOKASWCD.ORG



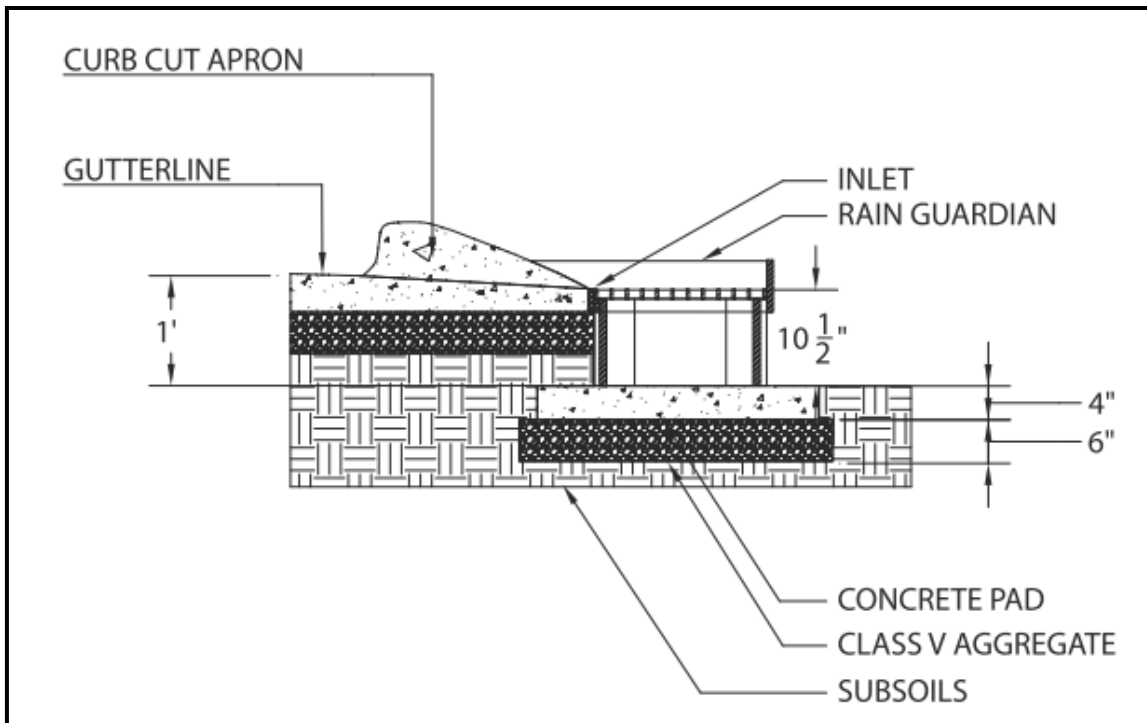
PLAN VIEW

PATENT PENDING



CROSS-SECTION VIEW

PATENT PENDING



SLAB DIMENSIONS, DISTANCE FROM CURB, AND CHAMBER ELEVATION MAY VARY WITH SITE CONDITIONS. THE TOP OF THE METAL GRATE, HOWEVER, SHOULD BE 1.5" - 2" BELOW THE OVERFLOW ELEVATION AND THE CONCRETE SLAB SHOULD EXTEND WELL BEYOND THE FILTER WALL TO SERVE AS A SPLASH DISSIPATER.

GALVANIZED STEEL GRATE (1-PIECE)

ANODIZED ALUMINUM AND FIBERGLASS FILTER ASSEMBLY

COMPOSITE CHAMBER

